

**EPM2AIP1 Antibody (internal region, near C-Term)**  
**Peptide-affinity purified goat antibody**  
**Catalog # AF2984a****Specification**

---

**EPM2AIP1 Antibody (internal region, near C-Term) - Product Information**

Application	WB, IHC, E
Primary Accession	<a href="#">Q7L775</a>
Other Accession	<a href="#">NP_055620.1</a> , <a href="#">9852</a>
Reactivity	Human
Predicted	Mouse, Rat, Dog
Host	Goat
Clonality	Polyclonal
Concentration	0.5 mg/ml
Isotype	IgG
Calculated MW	70370

**EPM2AIP1 Antibody (internal region, near C-Term) - Additional Information****Gene ID** 9852**Other Names**

EPM2A-interacting protein 1, Laforin-interacting protein, EPM2AIP1, KIAA0766

**Dilution**

WB~~1:1000

IHC~~1:100~500

E~~N/A

**Format**

0.5 mg/ml in Tris saline, 0.02% sodium azide, pH7.3 with 0.5% bovine serum albumin

**Storage**

Maintain refrigerated at 2-8°C for up to 6 months. For long term storage store at -20°C in small aliquots to prevent freeze-thaw cycles.

**Precautions**

EPM2AIP1 Antibody (internal region, near C-Term) is for research use only and not for use in diagnostic or therapeutic procedures.

**EPM2AIP1 Antibody (internal region, near C-Term) - Protein Information****Name** EPM2AIP1**Synonyms** KIAA0766**Cellular Location**

Endoplasmic reticulum

#### Tissue Location

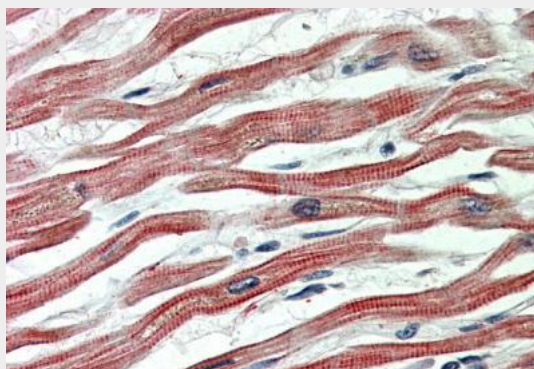
Expressed in heart, brain, placenta, liver, pancreas, kidney and skeletal muscle.

#### EPM2AIP1 Antibody (internal region, near C-Term) - Protocols

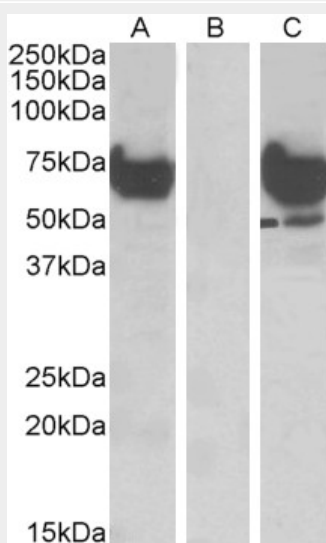
Provided below are standard protocols that you may find useful for product applications.

- [Western Blot](#)
- [Blocking Peptides](#)
- [Dot Blot](#)
- [Immunohistochemistry](#)
- [Immunofluorescence](#)
- [Immunoprecipitation](#)
- [Flow Cytometry](#)
- [Cell Culture](#)

#### EPM2AIP1 Antibody (internal region, near C-Term) - Images



AF2984a (5 µg/ml) staining of paraffin embedded Human Heart. Steamed antigen retrieval with citrate buffer pH 6, AP-staining.



HEK293 lysate (10ug protein in RIPA buffer) overexpressing Human EPM2AIP1 with DYKDDDDK tag probed with AF2984a (1ug/ml) in Lane A and probed with anti-DYKDDDDK Tag (1/1000) in lane

C. Mock-transfected HEK293 probed with AF2984a (1mg/ml) in Lane B. Primary incubations were for 1 hour. Detected by chemiluminescence.

#### **EPM2AIP1 Antibody (internal region, near C-Term) - References**

Identification of a novel protein interacting with laforin, the EPM2a progressive myoclonus epilepsy gene product. Ianzano L, Zhao XC, Minassian BA, Scherer SW, Genomics 2003 Jun 81 (6): 579-87. PMID: 12782127